

Invitation of quotation
Supply & Installation of CCTV Camera
At
Dhaka Commerce College

Memo No. : Dcc / 26/144/18
Date : 10th September, 2018
Last Date of Submission : 16th September, 2018 at 03:00 PM.



Dhaka Commerce College
Dhaka commerce College road, Mirpur, Dhaka-1216
Phone: 9023338, 9004942, 9007945
email: dcc1989@dcc.edu.bd
www.dcc.edu.bd

**Invitation of quotation for Supply & Installation of CCTV Camera at Dhaka
Commerce College**

Sealed quotations are hereby invited by the undersigned on behalf of the Principal, Dhaka Commerce College for supply & Installation of CCTV Camera for the Institute as per terms & conditions mentioned below. The filled quotations along with all the required documents must reach the office of the undersigned on or before 16th September, 2018 at 03.00 PM. The Envelope containing the quotation would please be sealed and super scribed as under:-

QUOTATION FOR SUPPLY & INSTALLATION OF CCTV CAMERA.

INSTITUTE : Dhaka Commerce College

Memo No. : Dcc / 26/144/18 ; **Date:** 10th September, 2018

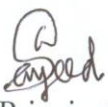
Last Date of Submission : 16th September, 2018 at 03:00 PM

Terms and conditions:

1. The scope of this tender is to invite quotations for supply and installation of CCTV Cameras from reputed suppliers.
2. The items supplied should remain under Warranty for at least one year.
3. The company should be able to rectify or replace the items as and when required within the stipulated time with the permission of Dhaka Commerce College authority.
4. The contractor should have adequate (at least five years) work experience of installing CCTV Camera, preferably in big companies. It should submit the supporting documents including list of clients and the copies of work order at least 3 (three) organizations it worked.
5. The bidders shall not be at liberty to offer his/her terms and conditions with regard to the tendered work that means the bidder cannot deviate from the terms and conditions given herein. Otherwise, the tenders are liable to be summarily rejected.
6. Vat and Tax applicable as per Government rule.
7. Delivery & Installation Period – within 30 days from Purchase order.

8. Installation period: 6pm to 10pm
9. The quotation should be addressed in the name of Principal, Dhaka Commerce College, Dhaka Commerce College road, Mirpur, Dhaka-1216. The rates are to be quoted on the company's letter head. Each page of the quotation / tender must be signed & stamped by the authorized Signatory. Unsigned quotations may not be considered.
10. Technical & Financial bids should be submitted separately in sealed cover and both these sealed covers should be put in a big cover which should also be sealed and the super-sealed as 'Quotation for installation of CCTV camera in Dhaka Commerce College'. Interested bidder may visit the site before quoting the price.
11. Becoming the lowest bidder will not be the criterion for awarding of purchase order unless the rates are reasonable & justified. Dhaka Commerce College authority reserves the right to accept or reject any or all of the bids in full or in part including the lowest, without assigning any reason there of or incurring any liability thereby.
12. The quantity of items given in the quotation is tentative, and it may be increase or decrease as per the institute's requirement.
13. Payment shall be made in Bangladeshi currency directly through accounts office of the authority subject to availability of fund as per rules and regulation of DCC and after deducting VAT, AIT/other taxes as per Govt. rules in the flowing manner.
 - a) **50%** of the contract price shall be paid after supply of materials and on submission of bill & related documents.
 - b) After successful installation/completion of the works, the contractor shall submit an original bill in duplicate along with copies of original challan, to the authority, for *another 25%* of the contract price of the goods installed at the site if certified by the Engineer in charge after due adjustment.
 - c) After successful completion of testing & commissioning of the work, the contractor shall submit an original bill in duplicate along with copies of original job completion report to the authority; for *another 15%* of the contract price of the work at the site if certified by the Engineer after due adjustments and submission of documents specified in BOQ supported by the acceptance certificate issued by the purchase committee & accepted by the Principal, DCC.

- d) The remaining 10% of the contract price shall be kept as security deposit against warranty period.
14. Rates shall be quoted and, subsequent payments under this contract shall be made in taka currency. The price offered by the quotationer, if accepted shall remain fixed for the duration of the contract.
15. The farm/agency may satisfy the following conditions and attach self-attested copy of the same with the quotation:
- a. Filled & signed copies of **Appendix-1** (Bill of Quantities) & **Appendix- 2** (Quotation Submission Letter)
 - b. Updated Trade license
 - c. Updated VAT and UTIN/TIN certificate
 - d. The farm should not be black listed by any Govt. Agency/Dept.
 - e. Technical specification & Catalog of Camera, NVR & POE switch
 - f. A brief layout design
 - g. Agency/ dealer's certificate
 - h. List of clients with their addresses and phone no./ Mobile no. and Email ID.
 - i. Copies of work order at least 3(three) organizations it worked.


Principal 10/09/2018

Dhaka Commerce College

Appendix-1

Bill of Quantities:

Sl Of Item	Description & Details	Unit	Qty	Unit Rate in Taka	Total Amount in Taka
1	IP color bullet IR camera: 02 megapixel IP POE HD Network IR Dome Camera. IR LED Display, Distansce-30M. Model: To be quoted. Brand: To be quoted. Manufacturer: To be quoted. Year of Manufacture: To be quoted. Country of Origin: To be quoted Assembled in: To be quoted Port of Shipment: To be quoted	Pcs	64		
2	Network video Recorder: 64 Channel Standalone NVR. Model: To be quoted. Brand: To be quoted. Manufacturer: To be quoted. Year of Manufacture: To be quoted. Country of Origin: To be quoted Assembled in: To be quoted Port of Shipment: To be quoted	Pcs	01		
3	6TB HDD /WD Model: To be quoted. Brand: To be quoted. Manufacturer: To be quoted. Year of Manufacture: To be quoted. Country of Origin: To be quoted Assembled in: To be quoted Port of Shipment: To be quoted	Pcs	03		
4	Solitine / Rozen burger Cable (At actual)	Coil	01		
5	Connector, Solitine(At actual)	pcs	01		

6	16 port POE Switch, Tenda-PEF- 1118P Model: To be quoted. Brand: To be quoted. Manufacturer: To be quoted. Year of Manufacture: To be quoted. Country of Origin: To be quoted Assembled in: To be quoted Port of Shipment: To be quoted (At actual)	pcs	01		
7	08 port POE Switch, Tenda-TEF- 1109P Model: To be quoted. Brand: To be quoted. Manufacturer: To be quoted. Year of Manufacture: To be quoted. Country of Origin: To be quoted Assembled in: To be quoted Port of Shipment: To be quoted (At actual)	pcs	01		
8	Martrix Switcher Model: To be quoted. Brand: To be quoted. Manufacturer: To be quoted. Year of Manufacture: To be quoted. Country of Origin: To be quoted Assembled in: To be quoted Port of Shipment: To be quoted	pcs	01		
9	PVC pipe, channel, clip, scro and others Accessories. (At actual)	Rft	01		
10	Power Cable (At actual)	coil	01		
11	Installation Charge for cctv	pcs	64		
12	Monitor: Konka / Samsung 55"	pcs	01		

Appendix-2

Quotation Submission Letter

[Use Letter-head Pad]

RFQ No: _____

Date: dd/mm/yy

To
The Principal
Dhaka Commerce College
Mirpur, Dhaka-1216

I/We, the undersigned, offer to supply in conformity with the Terms and Conditions for delivery of the goods and related services named [insert name of goods]

The total price of my/our quotation is BDT [insert amount both in figure and words]

My/Our quotation shall remain valid for the period stated in the RFQ Document and it shall remain binding upon us and, may be accepted at any time prior to the expiration of its validity period.

I/We declare that I/we have the legal capacity to enter into a contract with you, and have not been declared ineligible by the Government of Bangladesh on charges of engaging in corrupt, fraudulent, collusive or coercive practices. Furthermore, I/we am/are aware of the Terms and Conditions and pledge not to indulge in such practices in competing for or completion of delivery of goods.

I/We am/are not submitting more than one quotation in this RFQ process in my/our own name or other name or in different names. I/We understand that the purchase order issued by you shall constitute the contract and will be binding upon me/us.

I/We have examined and have no reservations to the RFQ Document issued by you on [insert date]

I/We understand that you reserve the right to reject all the quotations or annul the procurement proceedings without incurring any liability to me/us.

Signature of quotationer with Seal

Date:

16-Port Gigabit Easy Smart PoE Switch with 8-Port PoE+

TL-SG1016PE



16 10/100/1000Mbps RJ45 ports

Equipped with 8 PoE+ supported ports to transfer data and power over a single cable

Works with IEEE 802.3af/at compliant devices, expanding home and office networks

Simple network set-up on top of plug-and-play connectivity

Web-based user interface and management utility simplify configuration

*Actual data may vary in different usage environment.

[Learn more about TP-LINK PoE technology >](#)



What This Product Does

The TL-SG1016PE is a 16-Port Gigabit Desktop/Rack-mountable Switch with 8 ports supporting the PoE+ standard. It provides a simple way to expand a wired network by transferring power and data over single network cables. With a total power budget of 110W, up to 30W per port, TL-SG1016PE is flexible to support low power devices, such as wireless access point (AP), network camera or IP Phone or few high-power devices such as high power wireless or PTZ camera. Moreover, with innovative energy-efficient technology, the TL-SG1016PE can save up to 75% of the power consumption, making it an eco-friendly solution for your business network.

How This Product Works

TL-SG1016PE supports 8 Power over Ethernet Plus (PoE+) ports, which can automatically negotiate and supply appropriate power to any IEEE 802.3af/at compliant device. In this situation, the electrical power is transmitted along with data on a single cable, allowing you to expand your network where you want to install your wireless AP, camera or phone and no electric outlet available.

https://www.tp-link.com/us/products/details/cat-41_TL-SG1016PE.html

1/2

সহকারী প্রকৌশলী
ঢাকা কমার্শ কলেজ

Overload Protection

TL-SG1016PE is limiting its PoE power supply when its power is over the limit. When accumulated PoE power consumption exceeds 110W, the output current will be automatically limited and a PoE priority mechanism will be kick-in to arrange the priority among the 8 PoE ports.

Port Priority Function

PoE power priority is arranged along with the port number. The port 1 has the highest priority and the port 8 has the lowest priority. This function will help protect the system if the system power becomes overloaded. For example, Port 1, 2, 3, 4, and 5 are using 30w (maximum power per port is 30W), the system power is 110w in total (PoE max LED will be on if all PoE PDs power consumption is more than 110W). If there is an additional PD inserted to Port 4 with 20w then the system will cut off Port 5 power supply to protect the system, this means Port 1, 2, 3, will use 90w, and Port 4 will use 20w, and no power will be supplied to Port

Easy To Use

TL-SG1016PE is easy to install and use. It requires no configuration or installation. With its Desktop/Rack mountable design, outstanding performance and quality, the TP-LINK TL-SG1016PE 16-Port Gigabit Desktop/Rack-mountable Switch with 8-Port PoE is a great choice for expanding your home or office network.

[About Us](#)

[Corporate Profile](#)

[Contact Us](#)

[Careers at TP-Link](#)

[Privacy Policy](#)

[Press](#)

[News](#)

[Awards](#)

[Security Advisory](#)

[Partners](#)

[Partner Program](#)

[Training & Certifications](#)

[Deal Registration](#)

[Join TP-Link Community](#)

[Follow Us](#)

[United States / English](#)

Copyright © 2018 TP-Link Technologies Co., Ltd. All rights reserved.





Product search: Dome Cameras with f [Q]

Search in descriptions Advanced search

Login: [forgot]

Password: [forgot] Create account

Login

Language: [English]

Currency: [EUR]

Home [Contact]

Company closed in: 2018-08-15

- Group of products
- New products
 - CCTV Equipment
 - Terrestrial Television
 - Satellite Television
 - Intruder Alarms
 - Access Control
 - HDMI
 - Fiber Optics
 - LAN and WLAN
 - 2.4 and 5 GHz
 - Power Supply
 - Cables, Sockets, Plugs
 - Rack 19" and 10"
 - Electrical Installation Equipment
 - Mounting Technique
 - Other Products
 - Stock clearance
 - Sale

- Menu
- Main Page
 - Contact
 - About Us
 - Store Regulations
 - Returns and complaints
 - Withdrawal from the Agreement
 - Privacy Policy
 - Technical Support
 - Access to the Wholesale
 - Prices
 - Stocks
 - Terms of Delivery
 - Payments
 - Collect points - get rewards!
 - Advertising materials
 - Guarantee
 - Service Request
- Technical Dictionary
- Recommended article
- 2D/3D DNR**
- 2D/3D DNR noise reduction

Top CCTV Equipment IP Dome Cameras Dome Cameras with Fixed-Focal Lens and Infra-Red Illumination Code: DH-IPC-HDW1230SP-028

IP CAMERA DH-IPC-HDW1230SP-028 0B - 1080p 2.8 mm DAHUA



Prices visible to customers from Poland only

- For larger purchases, ask for an additional discount
- A moderate quantity of pieces in stock
- Add to the product list to compare

SHOW ALL DESCRIPTION SPECIFICATION PRESENTATION OUR TESTS FILES PACKAGE

SPECIFICATION

Search for similar

Standard:	TCP/IP
Sensor:	1/2.9" Progressive Scan CMOS
Scanning system:	Progressive
Matrix size:	2.1 Mpx
Resolution:	1920 x 1080 - 1080p 1280 x 1024 - 1.4 Mpx 1280 x 960 - 1.3 Mpx 1280 x 720 - 720p
Operation modes:	Main and sub streams may be in any configuration Firmware 2.460.0000.14.R, build : 2017-07-20 • Main stream : 1920 x 1080, 1280 x 1024, 1280 x 960, 1280 x 720 • Sub stream : 704 x 576, 640 x 480, 352 x 288
Lens:	2.8 mm
View angle:	• 101° (manufacturer data) • 102° (our tests result)
Range of IR illumination:	30 m
S/N ratio:	> 50 dB
Memory card slot:	-
Image compression method:	H.265 / H.264 / MJPEG
Alarm inputs / outputs:	-
Audio:	-
Bitrate:	24 ... 9472 kbps - H.264 14 ... 5632 kbps - H.265
Main stream frame rate:	25 fps @ 1920 x 1080
Network interface:	10/100 Base-T (RJ-45)
Network protocols:	HTTP, HTTPS, IPv4/IPv6, TCP, ARP, RTSP, RTP, UDP, SMTP, FTP, DHCP, DNS, DDNS, PPPoE, QoS, UPnP, NTP, Bonjour, IEEE 802.1x, Multicast, ICMP, IGMP, SNMP
WEB Server:	Built-in
Max. number of on-line users:	20
ONVIF:	16.12
Main features:	<ul style="list-style-type: none"> • WDR - 120 dB - Wide Dynamic Range • 3D-DNR - Digital Noise Reduction • ICR - Movable InfraRed filter • BLC - Back Light Compensation • HLC - High Light Compensation (spot) • AGC - Automatic Gain Control • Auto White Balance
Mobile phones support:	Port no.: 37777 or access by a cloud (P2P) • Android: Free application gDMSS Lite, Android: Free application Lechange • iOS (iPhone): Free application IDMSS Lite, iOS (iPhone): Free application Lechange There are also paid versions of mobile applications: gDMSS Plus, IDMSS Plus
Default IP address:	192.168.1.108
Default admin user / password:	admin / admin

This site uses cookies. More information about using by us cookie files, their usage and how to modify the acceptance of cookie files, can be found by pressing link

Add

Delta-Tools
Selection of Lenses

PC client access ports:	37777
Mobile client access ports:	37777
Port ONVIF:	80
RTSP URL:	rtsp://admin:admin@192.168.1.108:554/cam/realmonitor?channel=1&subtype=0 - Main stream rtsp://admin:admin@192.168.1.108:554/cam/realmonitor?channel=1&subtype=1 - Sub stream
Color:	White
Power supply:	<ul style="list-style-type: none"> PoE (802.3af), 12 V DC / 420 mA
Power consumption:	< 5.4 W
Housing:	Dome - Metal / Plastic
"Index of Protection":	IP67
Operation temp:	-30 °C ... 60 °C
Dimensions:	Ø 108 x 84 mm
Weight:	0.264 kg
Supported languages:	English, Polish
Manufacturer / Brand:	DAHUA
Guarantee:	3 years

COMPONENTS OF WORKING WITH: DH-IPC-HDW1230SP-028

<p>SWITCHING ADAPTER 12V/1A/5.5</p>  <p>Net: 3.21 EUR </p>	<p>IP DVR DHI-NVR2104-P-S2 4 CHANNELS +4-PORT POE SWITCH DAHUA</p>  <p>Prices visible to customers from Poland only</p>	<p>IP DVR DHI-NVR2104HS-S2 4 CHANNELS DAHUA</p>  <p>Prices visible to customers from Poland only</p>	<p>IP DVR DHI-NVR4208 8 CHANNELS DAHUA</p>  <p>Prices visible to customers from Poland only</p>
<p>IP DVR DHI-NVR4832 32 CHANNELS +eSATA DAHUA</p>  <p>Prices visible to customers from Poland only</p>	<p>CAMERA BRACKET PFA136 DAHUA</p>  <p>Prices visible to customers from Poland only</p>		

INTERESTING PRODUCTS

<p>IP CAMERA DH-IPC-HFW1230SP-028 0B - 1080p 2.8 mm DAHUA</p>  <p>Prices visible to customers from Poland only</p>	<p>CAMERA BRACKET PFA134 DAHUA</p>  <p>Prices visible to customers from Poland only</p>	<p>IP CAMERA DH-IPC-HDW1230SP-036 0B - 1080p 3.6 mm DAHUA</p>  <p>Prices visible to customers from Poland only</p>	<p>IP DVR DHI-NVR4116H 16 CHANNELS DAHUA</p>  <p>Prices visible to customers from Poland only</p>
--	---	--	---

60-713 Poznań, Graniczna 10 
tel.: +(48) 61 864 69 66
e-mail: shop@delta.poznan.pl

Working hours:
Mon.-Fri.: 8.00 - 19.00
Sat.: 8.00 - 14.00

Sales Department, Shipments
tel.: +(48) 61 864 69 66
e-mail: shop@delta.poznan.pl

Technical Support
tel.: +(48) 61 864 69 98
e-mail: support@delta.poznan.pl

Service
tel.: +(48) 61 864 69 64
e-mail: service@delta.poznan.pl

Contact
Store Regulations
Returns and complaints

Mobile/Classic
Sitemap

DHI-NVR5816/5832/5864-4KS2

16/32/64 Channel 2U 4K&H.265 Pro Network Video Recorder



- H.265/H.264/MJPEG/MPEG4 codec decoding
- Max 320Mbps incoming bandwidth
- Up to 12Mp resolution preview&playback
- 2HDMI/VGA simultaneous video output
- 3D intelligent positioning with Dahua PTZ camera
- Support RAID 0/1/5/6/10
- Support N+M fail over



System Overview

Dahua's NVR5000-4KS2 network video recorder offers an excellent performance and high recording quality for IP video surveillance applications. For applications where details are critical for identification, this professional NVR provides a powerful processor with up to 4K resolution. Additionally, the NVR features a mouse shortcut operation menu, remote management and control, centre storage, edge storage, and back up storage.

Designed as a cost-effective, easy installation, this NVR is ideal for a wide range of applications such as public safety, water conservancy, transportation, city centers, education, and financial institutions. The NVR is compatible with numerous third-party devices making it the perfect solution for surveillance systems with or without a video management system (VMS). Its open architecture supports multi-user access and is compatible with ONVIF 2.4, enabling interoperability when combined with 4K cameras.

Functions

RAID 0/1/5/6/10

Offering a balance between storage performance, storage capacity, and data integrity, the NVR features Fruitfull RAID 0/1/5/6/10 for faster and safer recording.

Fisheye Dewarping

The NVR features multiple fisheye dewarping modes to make viewing video easy whether its live or during playback.

N+M Hot Standby

The highly reliable redundancy N+M Hot Standby design provides a secure, failover technique ensuring immediate backup. In the event of a system failure, the slave instantly takes over the master ensuring no data is lost.

4K Resolution

The NVR supports 4K ultra HD resolution (3840 x 2160) for recording, live viewing and playback.

Intelligent Video System (IVS)

Working with built-in intelligent video analytics IP cameras, the NVR has the ability to detect and analyze moving objects for improved video surveillance. The NVR provides optional standard intelligence at the edge allowing detection of multiple object behaviors such as abandoned or missing objects. IVS also supports Tripwire analytics, allowing the camera to detect when a pre-determined line has been crossed, People Counting, ideal for business intelligence, and Face Detection, for searching or identification of individuals.

Point of Sale (POS)

Ideal for grocery and retail stores, the optional POS solution allows the NVR to receive a POS transaction via corresponding video. This feature allows merchants to analyze specific transactions via the Fuzzy search Algorithm.

ANR (Automatic Network Replenishment Technology)

Video record in SD card in IP cameras when the network breaks down, and after the network recovered, the video will be transferred to NVR and then recorded in it.



Pro series |DHI-NVR5816/5832/5864-4KS2

Technical Specification

System	
Main Processor	Quad-core embedded processor
Operating System	Embedded LINUX
Display	
Interface	2 HDMI (1 HDMI up to 3840x2160, Different Source), 1 VGA
Resolution	3840x2160, 1920x1080, 1280x1024, 1280x720, 1024x768
Multi-screen Display	1st screen: 16CH: 1/4/8/9/16 32CH: 1/4/8/9/16/25/36 64CH: 1/4/8/9/16/25/36 2nd screen: 1/4/8/9/16
OSD	Camera title, Time, Video loss, Camera lock, Motion detection, Recording
Video Detection and Alarm	
Trigger Events	Recording, PTZ, Tour, Alarm Out, Video Push, Email, FTP, Snapshot, Buzzer and Screen Tips
Video Detection	Motion Detection, MD Zones: 396 (22 × 18), Video Loss and Tampering
Alarm input	16 Channel, Low Level Effective, Green Terminal Interface
Relay Output	6 Channel, NO/NC Programmable, Green Terminal Interface
Tracking Trigger Event	N/A
Playback and Backup	
Sync Playback	1/4/9/16
Search Mode	Time /Date, Alarm, MD and Exact Search (accurate to second)
Playback Function	Play, Pause, Stop, Rewind, Fast play, Slow Play, Next File, Previous File, Next Camera, Previous Camera, Full Screen, Repeat, Shuffle, Backup Selection, Digital Zoom
Backup Mode	USB Device/Network/Internal SATA burner/eSATA Device
Storage	
Internal HDD	8 SATA III Ports, up to 6TB capacity for each HDD
HDD Mode	Single, Raid 0/1/5/6/10
eSATA	1 eSATA port
SAS	N/A
Auxiliary Interface	
Front Cover	N/A
USB	4 ports (2 Rear USB3.0,2 Front USB2.0)
RS232	1 Port, for PC Communication and Keyboard
RS485	1 Port, for PTZ Control

Third-party Support	
Third-party Support	Dahua, Arecont Vision, AXIS, Bosch, Brickcom, Canon, CP Plus, Dynacolor, Honeywell, Panasonic, Pelco, Samsung, Sanyo, Sony, Videotec, and more
Audio and Video	
IP Camera Input	16/32/64 Channel
Two-way Talk	1 Channel Input, 1 Channel Output, RCA
Recording	
Compression	H.265/H.264/MJPEG/MPEG4
Resolution	12Mp/8Mp/6Mp/5Mp/4Mp/3Mp/1080P/ 720P/ D1&etc.
Record Rate	320Mbps
Bit Rate	16kbps~20Mbps for per channel
Record Mode	Manual, Schedule(Regular(Continuous), MD, Alarm), Stop
Record Interval	1~120 min (default: 60 min), Pre-record: 1~30 sec, Post-record: 10~300 sec
Network	
Interface	2 RJ-45 ports (10/100/1000Mbps)
Ethernet Port	2 Ethernet Ports Joint Working or 2 Independent 1000Mbps Ethernet Ports
PoE	N/A
Network Function	HTTP, TCP/IP, IPv4/IPv6, UPNP, RTSP, UDP, SMTP, NTP, DHCP, DNS, IP Filter, PPPOE, DDNS, FTP, Alarm Server, IP Search(Support Dahua IP camera, DVR, NVS and etc.), P2P
Optical Fiber Interface	N/A
Max. User Access	128 users
Smart Phone	iPhone, iPad, Android
Interoperability	ONVIF 2.4, CGI Conformant
Electrical	
Power Supply	Single, AC 100~240V, 50/60 Hz
Power Consumption	<16.7W (without HDD)
Environmental	
Operating Conditions	-10°C ~ +55°C (+14°F ~ +131°F), 86 ~ 106kpa
Storage Conditions	-20°C ~ +70°C (-4°F ~ +158°F), 0 ~ 90% RH

Pro series | DHI-NVR5816/5832/5864-4KS2

Construction

Dimensions(WxDxH)	2U, 440mm×450.1mm×95mm (17.3" x 17.7" x 3.7")
Net Weight	6.55kg (14.4 lb) (without HDD)
Gross Weight	9.5kg(20.94 lb)(without HDD)

Certifications

CE	EN55022, EN55024, EN50130-4, EN60950-1
FCC	Part15 subpartB,ANSI C63.4-2014
UL	UL60950-1+CAN/CSA C22.2 No.60950-1

Ordering Information

Type	Part Number	Description
16 Channel NVR	DHI-NVR5816-4KS2	16 Channel 2U 4K&H.265 Pro Network Video Recorder
32 Channel NVR	DHI-NVR5832-4KS2	32 Channel 2U 4K&H.265 Pro Network Video Recorder
64 Channel NVR	DHI-NVR5864-4KS2	64 Channel 2U 4K&H.265 Pro Network Video Recorder
Accessories	ESS1504C	4 HDDs eSATA Storage
	ESS1508C	8 HDDs eSATA Storage

Accessories

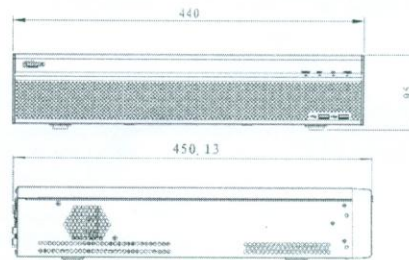


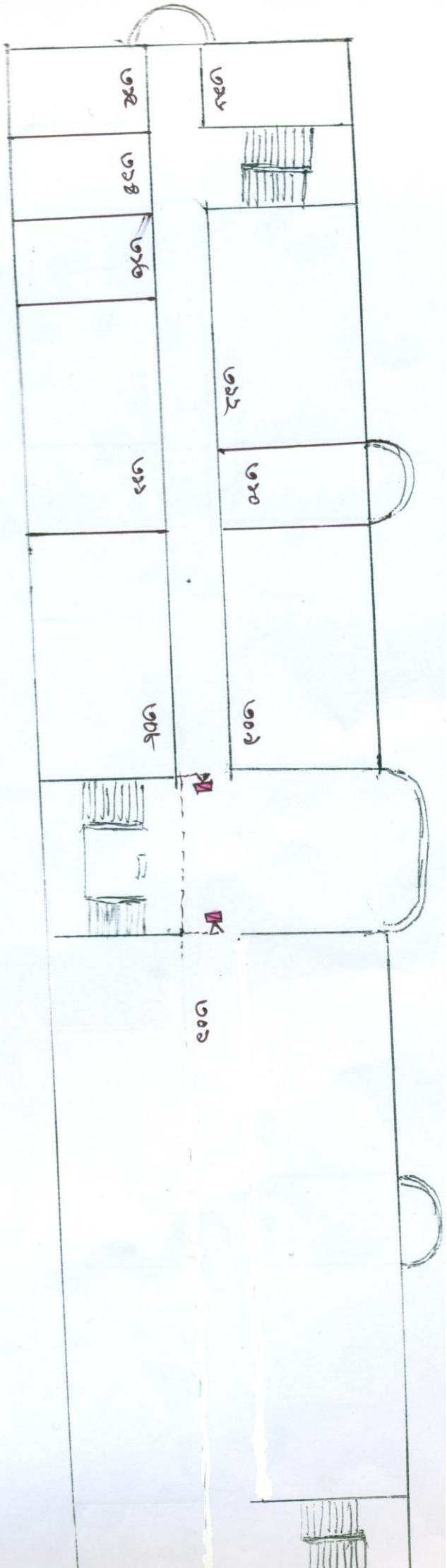
ESS1504C



ESS1508C

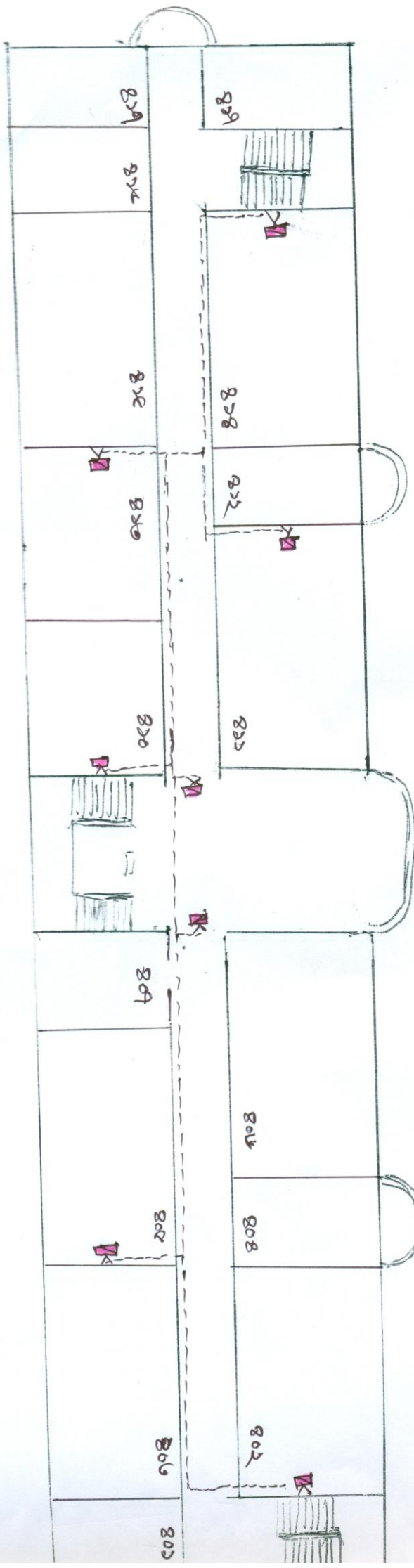
Dimensions (mm)






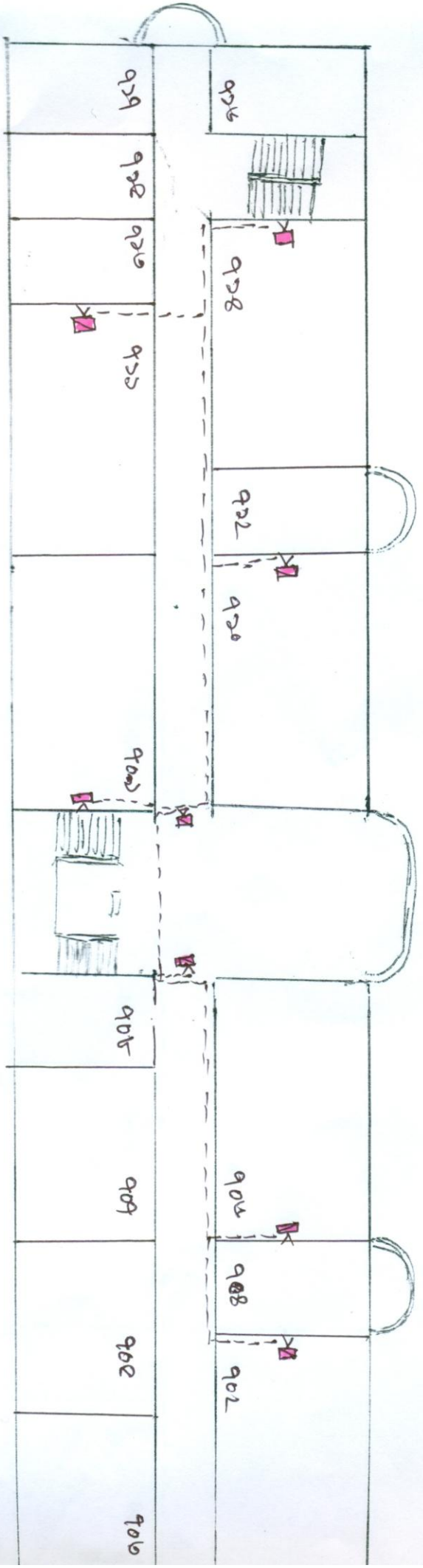
৪৭৭ ৩৫১

স্বাক্ষরিত
 মহোদয়
 সরকারী প্রকৌশলী
 ঢাকা বিশ্ববিদ্যালয় কলেজ




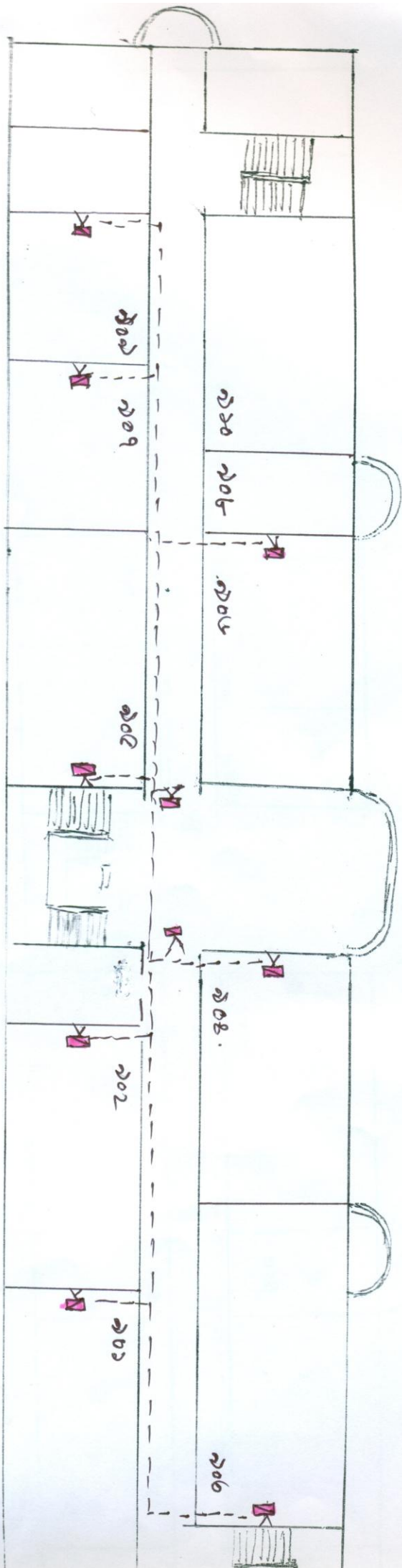
১ম মে ১৯৭২


 Md. Masud
 সিনিয়র শিক্ষক
 গণিত বিভাগ
 ঢাকা বিশ্ববিদ্যালয়



BAR OM


 গবেষণা প্রকৌশলী
 সত্যজিৎ কুমার



2045 6 11


 2045 6 11
 2045 6 11