

2

Invitation of Quotation  
For  
Supply & Installation of CCTV Camera  
At  
Dhaka Commerce College

Inquiry No. : DCC 68/149/19  
Date : 24<sup>th</sup> June' 19  
Last Date of Submission : 30<sup>th</sup> June' 19  
Drop off Point : Quotation box, kept in the Office (G-4)



**Dhaka Commerce College**  
Dhaka Commerce College Road, Mirpur, Dhaka-1216.  
Phone: +88-02-9023338, 9004942, 9007945  
[www.dcc.edu.bd](http://www.dcc.edu.bd)

**Invitation of Quotation for Supply & Installation of CCTV Camera  
Dhaka Commerce College.**

Sealed Quotation are hereby invited by the principal, Dhaka Commerce College, for Supply & Installation of CCTV Camera as per terms & conditions mentioned below. The filled Quotations along with all required documents must reach the office of the Dhaka Commerce College on or before 30<sup>th</sup> June'19 at 03:00PM. The Envelope containing the quotation would be sealed and superscribed as under:-


**Invitation of Quotation for Supply & Installation of CCTV Camera:**

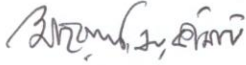
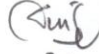
Institute : Dhaka Commerce College  
Inquiry No. : DCC 68/149/19; Date: 24<sup>th</sup> June'19  
Last date of submission : 30<sup>th</sup> June'19  
Drop off Point : Quotation box, kept in the Office (G-4)

**Terms and conditions:**

1. The scope of this tender is to invite quotations for supply and installation of CCTV Camera from reputed suppliers.
2. The items supplied should remain under Warranty for at least 01 Years from installation and commissioning.
3. The company should be able to rectify or replace the items as and when required within the stipulated time with the permission of Dhaka Commerce College authority.
4. The bidders shall not be at liberty to offer his/her terms and conditions with regard to the tendered work that means the bidder cannot deviate from the terms and conditions given here in. Otherwise, the tenders are liable to be summarily rejected.
5. The contractor should have adequate (at least five years) work experience of supply and installing CCTV Camera preferably in big companies. It should submit the supporting documents including List of clients and the copies of work order at least 3(three) Organizations it worked.
6. Vat and Tax applicable as per Government rule.
7. Delivery & Installation Period – within 07 days from the date of work order.
8. Working place Dhaka Commerce College Accademic building – 2, Floor 8<sup>th</sup> to 14<sup>th</sup>. Installation period: 05pm to 10pm.
9. The quotation should be addressed in the name of principal, Dhaka Commerce College, Dhaka Commerce College road, Mirpur, Dhaka -1216. The rates are to be quoted on the company's letter head. Each page of the quotation/ tender must be signed & stamped by the authorized Signatory, Unsigned quotations may not be considered.

- ①
10. Becoming Lowest bidder will not be the only criteria for awarding of purchase order unless the rates are reasonable & justified. Dhaka Commerce College authority reserves the right to accept or reject any or all of the bids in full or in part including the lowest, without assigning any reason there of or incurring any liability there by.
  11. The quantity of items given in the Quotation is tentative, which may be increased or decreased as per the Institute's requirement.
  12. Payment shall be made in Bangladesh Taka direct through accounts office of the authority as per rules and regulation of DCC and after deducting VAT, AIT/other taxes as per Govt. rules in the following manner:
    - a) **50% (Fifty) per cent** of the Contract Price shall be paid after supply of materials on submission of bill & related document
    - b) After successful installation/completion of the works; the contractor shall submit an original bill in duplicate, and with copies of original challan, to the Authority, for another **40% (Forty) per cent** of the Contract Price of the Goods installed at site if certified by the Engineer in charge after due adjustments.
    - c) The remaining **10% (Ten) per cent** of the Contract Price shall be kept as Security Deposit against Warranty period
  13. The price offered by the quotationer, if accepted shall remain fixed for the duration of the Contract.
  14. The firm/agency may satisfy the following conditions and attach self-attested copy of the same with the quotation:
    - a. Filled & signed copies of Appendix -1 (Bill of Quantities) & Appendix -2 (Quotation Submission Letter)
    - b. Updated Trade license.
    - c. Updated VAT and UTIN/TIN certificate.
    - d. The firm should not be black listed by any Govt. Agency/Dept.
    - e. Technical specification & Catalog of CCTV Camera
    - f. Agency / dealer's certificate
    - g. List of clients
    - h. Copies of work order at least 3 (three) Organizations it worked.

  
24/06/2019  
Principal (Act.)  
Dhaka Commerce College

  
  
24.6.19



Appendix -1

Bill of Quantities:

Sl. no	Description & Details	Unit	Qty	Unit price TK.	Total Amount TK.
1	Dahua IP color bullet IR camera: 02 megapixel IP POE HD Network IR Dome/bullet Camera.IR LED Display.Distansce-30M Brand: To be quoted. Model: To be quoted. Manufacturer: To be quoted. Year of Manufacture: To be quoted. Country of origin: To be quoted. Assmbled in: To be quoted. Port of Shipment: To be quoted.	Pcs	52		
2	Network Video Recrdr 64 Channel Standalone NVR: Brand: To be quoted. Model: To be quoted. Manufacturer: To be quoted. Year of Manufacture: To be quoted. Country of origin: To be quoted. Assmbled in: To be quoted. Port of Shipment: To be quoted.	pcs	01		
3	6TB HDD/WD: Brand: To be quoted. Model: To be quoted. Manufacturer: To be quoted. Year of Manufacture: To be quoted. Country of origin: To be quoted. Assmbled in: To be quoted. Port of Shipment: To be quoted.	Pcs	03		
4	Solitine/Rozen Burger Cable (At actul)	Coil	01		

2

5	16 port POE Switch.Tenda-PEF-1118P: Brand: To be quoted. Model: To be quoted. Manufacturer: To be quoted. Year of Manufacture: To be quoted. Country of origin: To be quoted. Assmbled in: To be quoted. Port of Shipment: To be quoted.	Pcs	09		
6	RJ Connector.Solitime (At actual)	Pcs	01		
7	PVC pipe, channel,clip,scrow and others Accessories.(At actual)	Rft	01		
8	Power cable (At actual)	coil	01		
9	Monitor: Konka55",Model:UDL55MH794ANTS	pc	01		
10	Installation charge for cctv	pcs	52		
11	HDMI Cable (original copper)	30M	02		

Appendix -2  
Quotation Submission Letter  
(use letter-head pad)

RFQ No: \_\_\_\_\_

Date: dd/mm/yy

To  
The principal  
Dhaka Commerce College  
Mirpur, Dhaka – 1216.

I/We the undersigned, offer to supply in conformity with the Terms and Conditions for the Goods and related services named (insert name of goods)

The total price of my/our Quotation is BDT (Insert amount both in figure and words)

My/our Quotation shall remain valid for period stated in the in the RFQ Document and it shall remain binding upon us and may be accepted at any time prior to the expiration of its validity.

I/we declare that I/we have the legal capacity to enter into a contract with you.and have not been declared ineligible by the Government of Bangladesh on charges of engaging in corrupt, fraudulent, collusive or coercive practices. Furthermmore, I/we am/are aware of the terms and Conditions and pledge not to indulge in such practices in competing for or completion of delivery of Goods.

I/we am/are not submitting more than one Quotation in this RFQ process in my/our own name or other name or in different names. I/we understand that the purchase Order issued by you shall constitute the Contract and will be binding upon me/us.

I/we have examined and have no reservations to the RFQ Document issued by you on (insert date)

I/we understand that you resrve the right to reject all the Quotations or annul the procurement proceedings without incurring any liability to me/us.

Signature of Quotationer with seal

Date:





Product search

Search in descriptions  Advanced search

Login:

Password:

Language:

Currency:

[Home](#) [Contact](#)

Top [CCTV Equipment](#) [IP](#) [Dome Cameras](#) [Dome Cameras with Fixed-Focal Lens and Infra-Red Illumination](#)  
**Code: DH-IPC-HDW1230SP-028**

## IP CAMERA DH-IPC-HDW1230SP-028 - 1080p 2.8 mm DAHUA

- Group of products
- New products**
  - CCTV Equipment
  - Terrestrial Television
  - Satellite Television
  - Intruder Alarms
  - Access Control
  - HDMI
  - Fiber Optics
  - LAN and WLAN
  - 2.4 and 5 GHz
  - Power Supply
  - Cables, Sockets, Plugs
  - Rack 19" and 10"
  - Electrical Installation Equipment
  - Mounting Technique
  - Other Products
  - Stock clearance
  - Sale**



Net: 108.83 EUR Gross: 133.86 EUR  
**Product withdrawn from the offer**

**DESCRIPTION**

Continuation of the product is: [IPC-HDW1230S-0280B](#)

IP camera with efficient H.264 / H.265 image compression algorithm for clear and smooth video streaming at maximal resolution of 1080p.

The compatibility of the camera with ONVIF standard ensures it can be used in different IP surveillance systems regardless of manufacturer. PoE powering possibility, compatible with the 802.3af standard makes the device more universal and easier to install.

**SPECIFICATION** Search for similar

Standard:	TCP/IP
Sensor:	1/2.7" Progressive Scan CMOS
Scanning system:	Progressive
Matrix size:	2.1 Mpx
Resolution:	1920 x 1080 - 1080p 1280 x 1024 - 1.4 Mpx 1280 x 960 - 1.3 Mpx 1280 x 720 - 720p
Operation modes:	Main and sub streams may be in any configuration Firmware 2.460.0000.14.R, build : 2017-07-20 <ul style="list-style-type: none"> <li>• Main stream : 1920 x 1080, 1280 x 1024, 1280 x 960, 1280 x 720</li> <li>• Sub stream : 704 x 576, 640 x 480, 352 x 288</li> </ul>
Lens:	2.8 mm
View angle:	<ul style="list-style-type: none"> <li>• 104 ° (manufacturer data)</li> <li>• 102 ° (our tests result)</li> </ul>
Range of IR illumination:	30 m
S/N ratio:	> 50 dB
Memory card slot:	—
Image compression method:	H.265 / H.264 / MJPEG
Alarm inputs / outputs:	—
Audio:	—
Bitrate:	24 ... 9472 kbps - H.264 14 ... 5632 kbps - H.265
Main stream frame rate:	25 fps @ 1920 x 1080
Network interface:	10/100 Base-T (RJ-45)
Network protocols:	HTTP, HTTPS, IPv4/IPv6, TCP, ARP, RTSP, RTP, UDP, SMTP, FTP, DHCP, DNS, DDNS, PPPoE, QoS, UPnP, NTP, Bonjour, IEEE 802.1x, Multicast, ICMP, IGMP, SNMP
WFR Server:	RealIP-in

**Menu**

- Main Page
- Contact
- About Us
- Store Regulations
- Returns and complaints
- Withdrawal from the Agreement
- Privacy Policy
- Technical Support
- Access to the Wholesale
- Prices
- Stocks
- Terms of Delivery
- Payments
- Collect points - get rewards!
- Advertising materials

---

Guarantee

**Service Request**

---

Frequently Asked Questions

**Technical Dictionary**

[Recommended article](#)

$P(dBm) = 10 \log \frac{P(mW)}{1mW}$

dBm - logarithmic power unit

---

E-mail Newsletter

This site uses cookies. More information about using by us cookie files, their usage and how to modify the acceptance of cookie files, can be found by pressing [link](#)

Delta-Tools  
Selection of Lenses  
Power calculator

ONVIF:	16.12
Main features:	<ul style="list-style-type: none"> <li>• WDR - 120 dB - Wide Dynamic Range</li> <li>• 3D-DNR - Digital Noise Reduction</li> <li>• ICR - Movable InfraRed filter</li> <li>• BLC - Back Light Compensation</li> <li>• HLC - High Light Compensation (spot)</li> <li>• AGC - Automatic Gain Control</li> <li>• Auto White Balance</li> </ul>
Mobile phones support:	Port no.: 37777 or access by a cloud (P2P) <ul style="list-style-type: none"> <li>• Android: Free application <b>gDMSS Lite</b>, Android: Free application <b>IMOU</b></li> <li>• IOS (iPhone): Free application <b>IDMSS Lite</b>, IOS (iPhone): Free application <b>IMDU</b></li> </ul> There are also other versions of mobile applications: gDMSS Plus, IDMSS Plus
Default IP address:	192.168.1.108
Default admin user / password:	admin / admin
Web browser access ports:	80, 37777
PC client access ports:	37777
Mobile client access ports:	37777
Port ONVIF:	80
RTSP URL:	rtsp://admin:admin@192.168.1.108:554/cam/realmonitor?channel=1&subtype=0 - Main stream rtsp://admin:admin@192.168.1.108:554/cam/realmonitor?channel=1&subtype=1 - Sub stream
Color:	White
Power supply:	<ul style="list-style-type: none"> <li>• PoE (802.3af),</li> <li>• 12 V DC / 420 mA</li> </ul>
Power consumption:	< 5,4 W
Housing:	Dome - Metal / Plastic
"Index of Protection":	IP67
Operation temp:	-30 °C ... 60 °C
Dimensions:	Ø 108 x 84 mm
Weight:	0.264 kg
Supported languages:	English, Polish
Manufacturer / Brand:	DAHUA
Guarantee:	<b>3 years</b>

#### PRESENTATION



Camera is out from clamping ring:



Mounting side view:





Product search:

Search in descriptions  Advanced search

Login:  [Create account](#)

Password:

Language: [English](#)

Currency: [EUR](#)

Home [Contact](#)

Top [CCTV Equipment](#) [IP](#) [Bullet Cameras](#) [IP Cameras with Fixed-Focal Lens and Infra-Red Illumination, up to 1080p](#)  
**Code: DH-IPC-HFW1230SP-028**

## IP CAMERA DH-IPC-HFW1230SP-028 - 1080p 2.8 mm DAHUA



Net: 108.83 EUR Gross: 133.86 EUR  
**Product withdrawn from the offer**

- Group of products
- New products** ★
  - CCTV Equipment
  - Terrestrial Television
  - Satellite Television
  - Intruder Alarms
  - Access Control
  - HDMI
  - Fiber Optics
  - LAN and WLAN
  - 2.4 and 5 GHz
  - Power Supply
  - Cables, Sockets, Plugs
  - Rack 19" and 10"
  - Electrical Installation Equipment
  - Mounting Technique
  - Other Products
  - Stock clearance
  - Sale** 🔥

SHOW ALL | DESCRIPTION | SPECIFICATION | PRESENTATION | OUR TESTS | FILES | PACKAGE

**DESCRIPTION**

Continuation of the product is: [IPC-HFW1230S-0280B](#)

The product's predecessor was: [DH-IPC-HFW1220SP-028](#)

IP camera with efficient H.264 image compression algorithm for clear and smooth video streaming at maximal resolution of 1080p.

The compatibility of the camera with ONVIF standard ensures it can be used in different IP surveillance systems regardless of manufacturer. PoE powering possibility, compatible with the 802.3af standard makes the device more universal and easier to install.

**SPECIFICATION** Search for similar 🔍

Standard:	TCP/IP
Sensor:	1/2.9" Progressive Scan CMOS
Matrix size:	2.1 Mpx
Scanning system:	Progressive
Resolution:	1920 x 1080 - 1080p 1280 x 1024 - 1.4 Mpx 1280 x 960 - 1.3 Mpx 1280 x 720 - 720p
Operation modes:	Main and sub streams may be in any configuration Firmware 2.460.0000.14.R, build : 2017-07-20 <ul style="list-style-type: none"> <li>• Main stream : 1920 x 1080, 1280 x 1024, 1280 x 960, 1280 x 720</li> <li>• Sub stream : 704 x 576, 640 x 480, 352 x 288</li> </ul>
Lens:	2.8 mm
View angle:	<ul style="list-style-type: none"> <li>• 101 ° (manufacturer data)</li> <li>• 102 ° (our tests result)</li> </ul>
Range of IR illumination:	30 m
S/N ratio:	> 50 dB
RS-485 Interface:	—
Memory card slot:	—
Image compression method:	H.265 / H.264 / MJPEG
Alarm inputs / outputs:	—
Audio:	—
Bitrate:	4 ... 8192 kbps
Main stream frame rate:	25 fps @ 1080p
Network interface:	10/100 Base-T (RJ-45)
Network protocols:	HTTP, HTTPS, IPv4/IPv6, TCP, RTSP, RTP, UDP, SMTP, FTP, DHCP, DNS, DDNS, PPPoE, UPnP, NTP, QoS, Bonjour, IEEE 802.1x, Multicast, ICMP, IGMP, SNMP

**Menu**

- Main Page
- Contact
- About Us
- Store Regulations
- Returns and complaints
- Withdrawal from the Agreement
- Privacy Policy
- Technical Support
- Access to the Wholesale
- Prices
- Stocks
- Terms of Delivery
- Payments
- Collect points - get rewards!
- Advertising materials

---

Guarantee

**Service Request**

Frequently Asked Questions

**Technical Dictionary**

[Recommended article](#)

$$P(dBm) = 10 \log \frac{P(mW)}{1mW}$$

dBm - logarithmic power unit

---

E-mail Newsletter

This site uses cookies. More information about using by us cookie files, their usage and how to modify the acceptance of cookie files, can be found by pressing link [X](#)

Delta-Tools  
Selection of Lenses  
Power calculator

Max. number of on-line users:	20
ONVIF:	16.12
Mobile phones support:	Port no.: 37777 or access by a cloud (P2P) <ul style="list-style-type: none"> <li>• Android: Free application gDMSS Lite, Android: Free application IMOU</li> <li>• iOS (iPhone): Free application iDMSS Lite, iOS (iPhone): Free application IMOU</li> </ul>
Default admin user / password:	admin / admin
Default IP address:	192.168.1.108
Web browser access ports:	80, 37777
PC client access ports:	37777
Mobile client access ports:	37777
Port ONVIF:	80
RTSP URL:	rtsp://admin:admin@192.168.1.108:554/cam/realmonitor?channel=1&subtype=0 - Main stream rtsp://admin:admin@192.168.1.108:554/cam/realmonitor?channel=1&subtype=1 - Sub stream
Main features:	<ul style="list-style-type: none"> <li>• 3D-DNR - Digital Noise Reduction</li> <li>• D-WDR - Wide Dynamic Range</li> <li>• BLC/HLC - Back Light / High Light Compensation</li> <li>• Possibility to change the resolution, quality and bit rate</li> <li>• Motion Detection</li> <li>• Privacy zones</li> <li>• Configurable Privacy Zones</li> <li>• Mirror - Mirror image</li> </ul>
Power supply:	<ul style="list-style-type: none"> <li>• PoE (802.3af),</li> <li>• 12 V DC / 450 mA</li> </ul>
Power consumption:	≤ 5,4 W
Housing:	Compact - Metal
Color:	White
*Index of Protection*:	IP67
Operation temp:	-30 °C ... 60 °C
Weight:	0.40 kg
Dimensions:	Ø 70 x 165 mm
Supported languages:	English, Polish
Manufacturer / Brand:	DAHUA
Guarantee:	<b>3 years</b>

## PRESENTATION





# DHI-NVR5816/32/64-4KS2

16/32/64Channel 2U 4K&H.265 Pro Network Video Recorder (V2.00)



- Smart H.265+/H.265/Smart H.264+/H.264/MJPEG
- Max 320Mbps Incoming Bandwidth
- Up to 12MP Resolution for Preview and Playback
- 2HDMI/2VGA simultaneous video output



## System Overview

Dahua new NVR5000-4KS2 network video recorder delivers excellent performance and high recording quality that is ideally suitable for IP video surveillance applications. This professional NVR adopts powerful processor, providing the capability of 4K resolution processing for applications where image details are highly required. Additionally, the NVR can be served as edge storage, central storage or backup storage with an intuitive shortcut operation menu for remote management and control.

Due to its easy-to-install design, the NVR is ideal for a wide range of applications such as public safety, water conservancy, transportation, city centers, education, and financial institutions.

The NVR is compatible with numerous third-party devices, which make it the perfect solution for surveillance systems that work independently of video management system (VMS). It features an open architecture that supports for multi-user access and is compatible with ONVIF 2.4 protocol, enabling interoperability with 4K cameras.

## Functions

### Smart H.265+

Smart H.265+ is the optimized implementation of the H.265 codec that uses a scene-adaptive encoding strategy, dynamic GOP, dynamic ROI, flexible multi-frame reference structure and intelligent noise reduction to deliver high-quality video without straining the network. Smart H.265+ technology reduces bit rate and storage requirements by up to 70% when compared to standard H.265 video compression.

### Smart Fan

The NVR is equipped with a smart fan to achieve high cooling efficiency. It automatically adjusts fan speed according to CPU and ambient temperature. The fan is long-lasting and low noise, reducing maintenance costs and improving the user experience.

### DMSS

The DMSS app is available on the iOS App Store and Google Play. It makes surveillance easy and simple, allowing you to remotely access NVR devices, view live video, receive event push notifications, and search for recorded videos from an iPhone, iPad, or Android phone at anytime from virtually anywhere!

### Fisheye Dewarping

Fisheye dewarping solves the problem of distortion in the circular panoramic view. The NVR offers various dewarping modes for different installations and configurations that enhance the video, in both live or playback modes. Each dewarping mode offers options to adjust each scene.

### ANPR

Automatic Number Plate Recognition available for convenient entrance/exit management. Support license plate recognition(working with Dahua ITC camera), black/white list import/export, add/delete B/W list number, search result from recorded video.

### Point of Sale (POS)

Ideal for grocery and retail stores, the optional POS solution allows the NVR to receive a POS transaction via corresponding video. This feature allows merchants to analyze specific transactions via the Fuzzy search algorithm.

### Automatic Network Replenishment (ANR) Technology

Network Video Recorders with the ANR function automatically store video data on an IP camera SD card when the network is disconnected. After recovery of the network, the NVR automatically retrieves the video data stored on the camera.



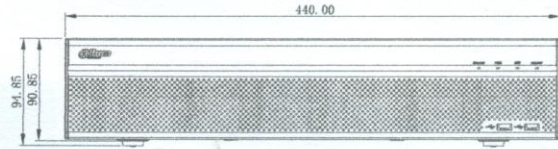


Technical Specification	
<b>System</b>	
Main Processor	Quad-core embedded processor
Operating System	Embedded LINUX
<b>Audio and Video</b>	
IP Camera Input	16/32/64 Channel
Two-way Talk	1 Channel Input, 2 Channel Output, RCA
<b>Display</b>	
Interface	2 HDMI, 2 VGA
Resolution	HDMI1: 3840 × 2160, 1920 × 1080, 1280 × 1024, 1280 × 720, 1024 × 768
	VGA1: 1920 × 1080, 1280 × 1024, 1280 × 720, 1024 × 768
	HDMI2/VGA2: 1920 × 1080
Decoding Capability	4-ch@8MP(30fps), 16-ch@1080P(30fps)
Multi-screen Display	1st Screen: 16CH: 1/4/8/9/16 32CH: 1/4/8/9/16/25/36 64CH: 1/4/8/9/16/25/36/64 2nd Screen: 1/4/8/9/16
OSD	Camera title, Time, Camera lock, Motion detection, Recording
<b>Recording</b>	
Compression	Smart H.265+/H.265/Smart H.264+/H.264/MJPEG
Resolution	12MP, 8MP, 6MP, 5MP, 4MP, 3MP, 1080P, 1.3MP, 720P, D1 etc.
Bit Rate	16Kbps ~ 20Mbps Per Channel
Record Mode	Manual, Schedule (Regular, MD(Motion Detection), Alarm, IVS), Stop
Record Interval	1 ~ 120 min (default: 60 min), Pre-record: 1 ~ 30 sec, Post-record: 10 ~ 300 sec
<b>Video Detection and Alarm</b>	
Trigger Events	Recording, PTZ, Tour, Alarm Out, Video Push, Email, Snapshot, Buzzer and Screen Tips
Video Detection	Motion Detection, MD Zones: 396 (22 × 18), Video Loss and Tampering
Alarm input	16 Channel
Relay Output	6 Channel
<b>Playback and Backup</b>	
Sync Playback	1/4/9/16
Search Mode	Time /Date, Alarm, MD and Exact Search (accurate to second)
Playback Function	Play, Pause, Stop, Rewind, Fast play, Slow Play, Next File, Previous File, Next Camera, Previous Camera, Full Screen, Backup Selection, Digital Zoom
Backup Mode	USB Device/Network/eSATA Device
<b>Third-party Support</b>	
Third-party Support	Arecont Vision, Airlive, AXIS, Canon, Dynacolor, JVC, LG, Panasonic, Pelco, PSIA, Samsung, Sanyo, Sony, Watchnet and more

<b>Network</b>	
Interface	2 RJ-45 Ports (10/100/1000Mbps) Independent or Joint Working
PoE	N/A
Network Function	HTTP, HTTPS, TCP/IP, IPv4/IPv6, UPnP, SNMP, RTSP, UDP, SMTP, NTP, DHCP, DNS, IP Filter, PPPoE, DDNS, FTP, Alarm Server, IP Search (Support Dahua IP camera, DVR, NVS, etc.), P2P
Max. User Access	128 users
Smart Phone	iPhone, iPad, Android
Interoperability	ONVIF 2.4, SDK, CGI
<b>Storage</b>	
Internal HDD	8 SATA III Ports, Up to 10 TB capacity for each HDD
eSATA	1 eSATA
<b>Auxiliary Interface</b>	
USB	4 USB Ports (2 Rear USB 3.0, 2 Front USB 2.0)
RS232	1 Port, for PC Communication and Keyboard
RS485	1 Port, for PTZ Control
<b>Electrical</b>	
Power Supply	Single, AC100V ~ 240V, 50 ~ 60 Hz
Power Consumption	<16.7W (Without HDD)
Fan	Smart fan, automatically adjust running speed
<b>Environmental</b>	
Operating Conditions	-10°C ~ +55°C (+14°F ~ +131°F), 86 ~ 106kpa
Storage Conditions	-20°C ~ +70°C (-4°F ~ +158°F), 0 ~ 90% RH
<b>Construction</b>	
Dimensions	2U, 440mm x 451.5mm x 94.9mm ; (17.3" x 17.7" x 3.7")
Net Weight	6.55kg (14.4 lb) (without HDD)
Gross Weight	9.5kg (20.94 lb) (without HDD)
Installation	Rack-mounted
<b>Certifications</b>	
CE	EN55022, EN55024, EN50130-4, EN60950-1
FCC	Part 15 Subpart B, ANSI C63.4-2014
UL	UL 60950-1

Ordering Information		
Type	Part Number	Description
16 Channel NVR	DHI-NVR5816-4KS2	16 Channel 2U 4K&H.265 Pro Network Video Recorder
32 Channel NVR	DHI-NVR5832-4KS2	32 Channel 2U 4K&H.265 Pro Network Video Recorder
64 Channel NVR	DHI-NVR5864-4KS2	64 Channel 2U 4K&H.265 Pro Network Video Recorder
Accessories	ESS1504C	4 HDDs eSATA Storage (Please confirm with Technical Support for HDD capacity & compatibility)

Dimensions (mm)



Accessories



ESS1504C

Rear Panel



## 16-Port Gigabit Easy Smart Switch TL-SG1016DE



16 10/100/1000Mbps RJ45 ports

Provides network monitoring, traffic prioritization and VLAN features

Innovative energy-efficient technology reduces power output by up to 18%

Simple network set-up on top of plug-and-play connectivity

Web-based user interface and management utility simplify configuration



### What This Product Does

The TL-SG1016DE 16-Port Gigabit Easy Smart switch is an ideal upgrade from an unmanaged switch, designed for Small and Medium Business networks that require simple network management. Network administrators can effectively monitor traffic via Port Mirroring, Loop Prevention and Cable Diagnostics features. To optimize traffic on your business network, TL-SG1016DE offers Port Priority/802.1P Priority and DSCP QoS<sup>1</sup> to keep latency-sensitive traffic moving smoothly and jitter-free. Additionally, port-based, tag-based and MTU VLAN can improve security and meet more network segmentation requirements. Moreover, with its innovative energy-efficient technology, the TL-SG1016DE can save up to 18% of power consumption, making it an eco-friendly solution for your business network.

### Effective Management

TP-LINK's Gigabit Easy Smart switch, TL-SG1016DE offers network monitoring for users to observe traffic behavior. With Port Mirroring, Loop Prevention and Cable Diagnostics features, TL-SG1016DE can identify and even locate connection problems in your business network. Moreover, administrators can designate the priority of the traffic based on Port Priority and Port/802.1P





DSCP Priority, to ensure that voice and video are always clear, smooth and lag-free. Additionally, to improve security and network performance, TL-SG1016DE supports MTU VLAN, port-based VLAN and 802.1Q-based VLAN functions. TL-SG1016DE is an upgrade from the plug-and-play Unmanaged Switch, delivering great value while empowering your network and similarly delivering great value to the end user.

## Go Green With Your Ethernet

You now have the choice to go green when upgrading to a gigabit network! This new generation of TL-SG1016DE 16-Port Gigabit Easy Smart Switch features the latest energy-efficient technologies that can greatly expand your network's capacity with much less power. It automatically adjusts power consumption according to the link status and cable length to limit the carbon footprint of your network.

### Power down Idle Ports

When a computer or network equipment is off, the corresponding port of a traditional switch will continue to consume considerable amounts of power. The TL-SG1016DE can automatically detect the link status of each port and reduce the power consumption of ports that are idle.

### Power Budget According to Cable Length

Ideally, shorter cables would use less power with less power degradation over their length; this is not the case with most devices as they will use the same amount of power across the cable regardless of whether it is 10 or 50 meters in length. The TL-SG1016DE analyzes the length of the Ethernet cable connected and adjusts the power usage accordingly, rather than keeping the power consumption in a conventional solution.

## Ease to Use

TL-SG1016DE is easy to use and manage. Auto MDI/MDI-X crossover on all ports eliminates the need for crossover cables or uplink ports. Auto-negotiation on each port senses the link speed of a network device (either 10, 100, or 1000 Mbps) and intelligently adjusts for compatibility and optimal performance. Its compact size makes it ideal for desktops with limited space while also being Rack-mountable, convenient and safe. Dynamic LED lights provide real-time work status display and basic fault diagnosis.

1. DSCP QoS is for V2 and later version.

[About Us](#)

[Press](#)

[Partners](#)

[Corporate Profile](#)

[News](#)

[Partner Program](#)

[Contact Us](#)

[Awards](#)

[Training & Certifications](#)

[Careers at TP-Link](#)

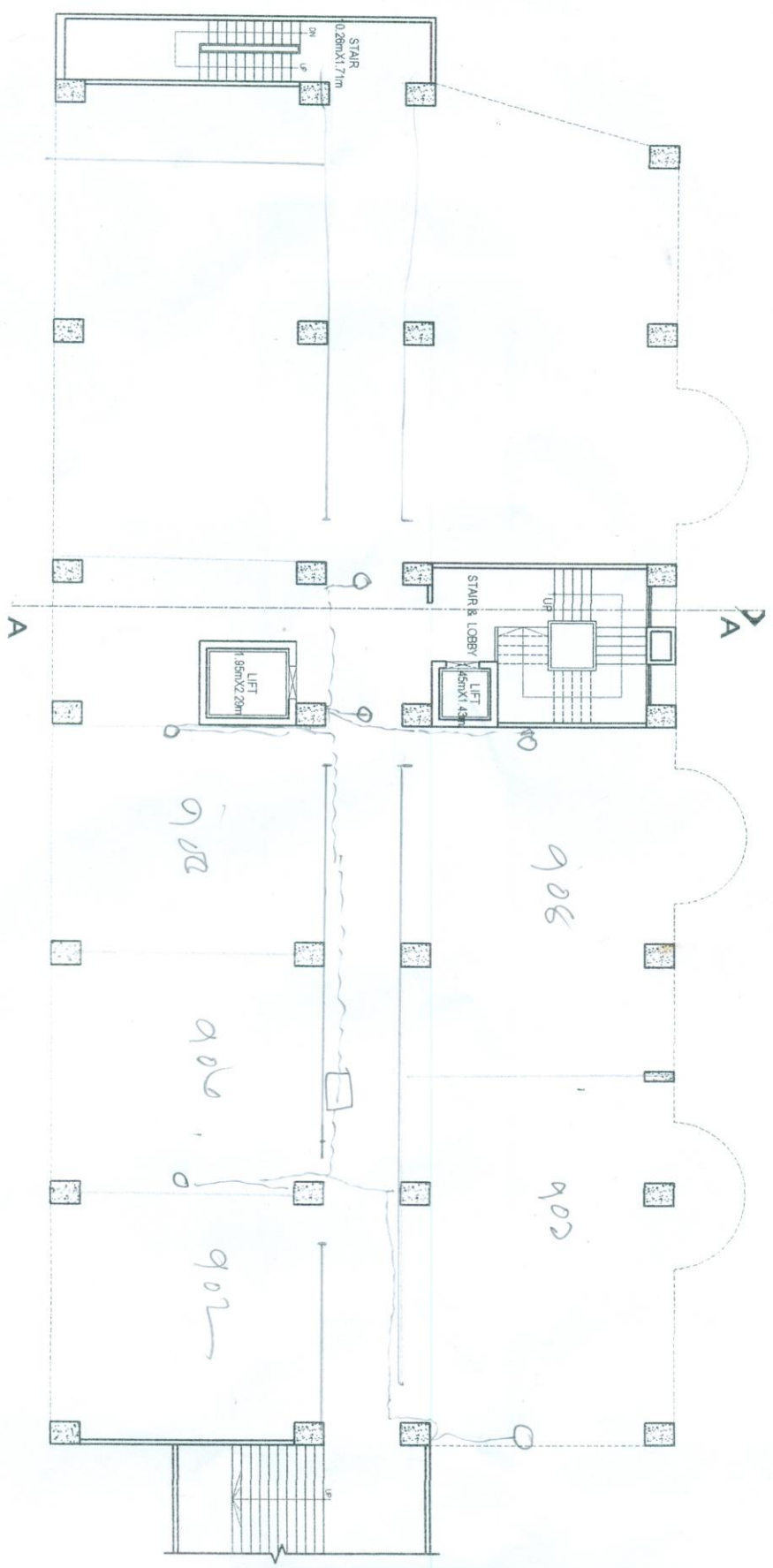
[Security Advisory](#)

[Deal Registration](#)

[Privacy Policy](#)

[Subscription](#)

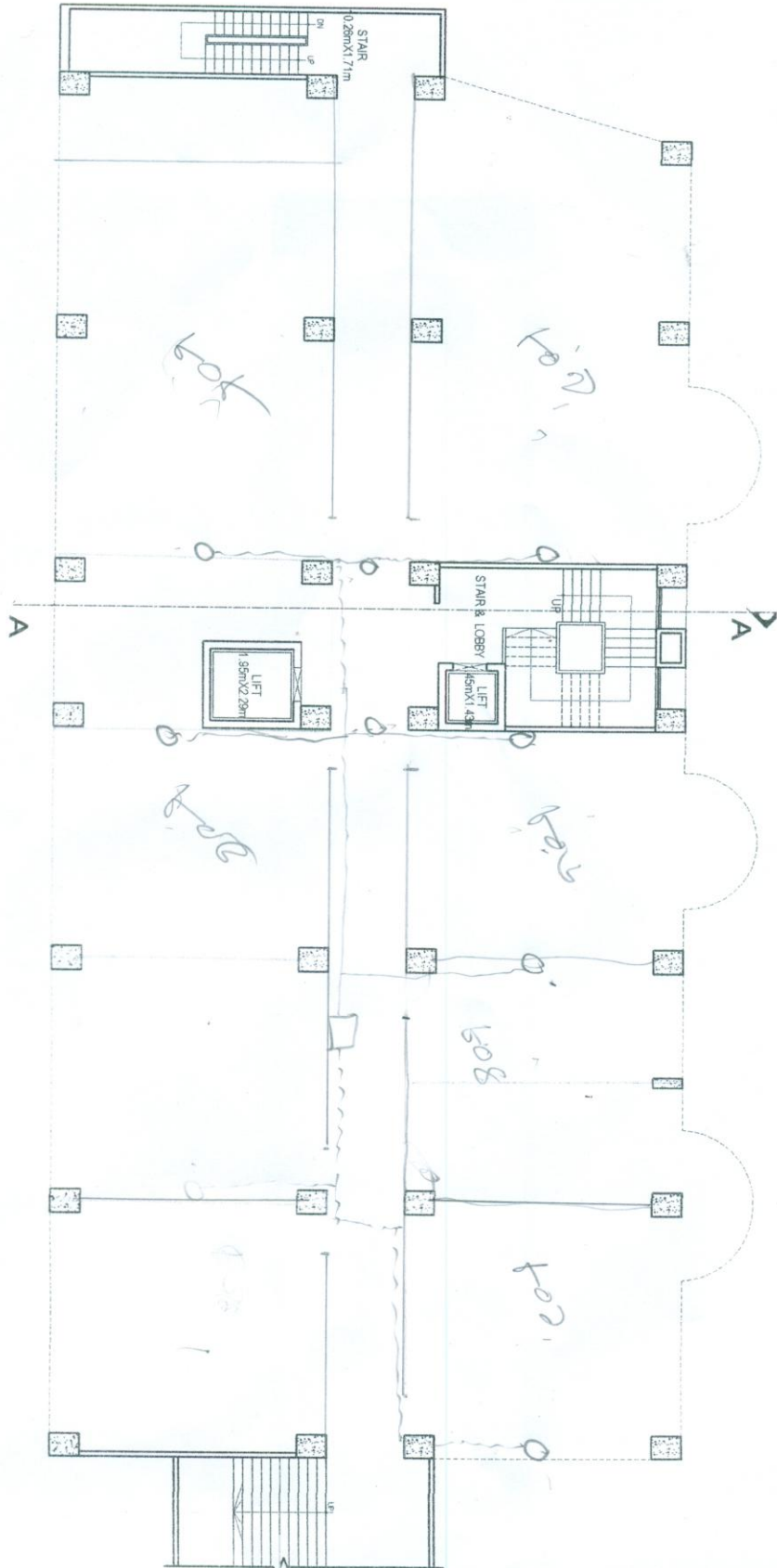
23



Handwritten note: 902, 906, 908, 909 (area of concern)

Handwritten note: 902, 906, 908, 909

29



קורידור

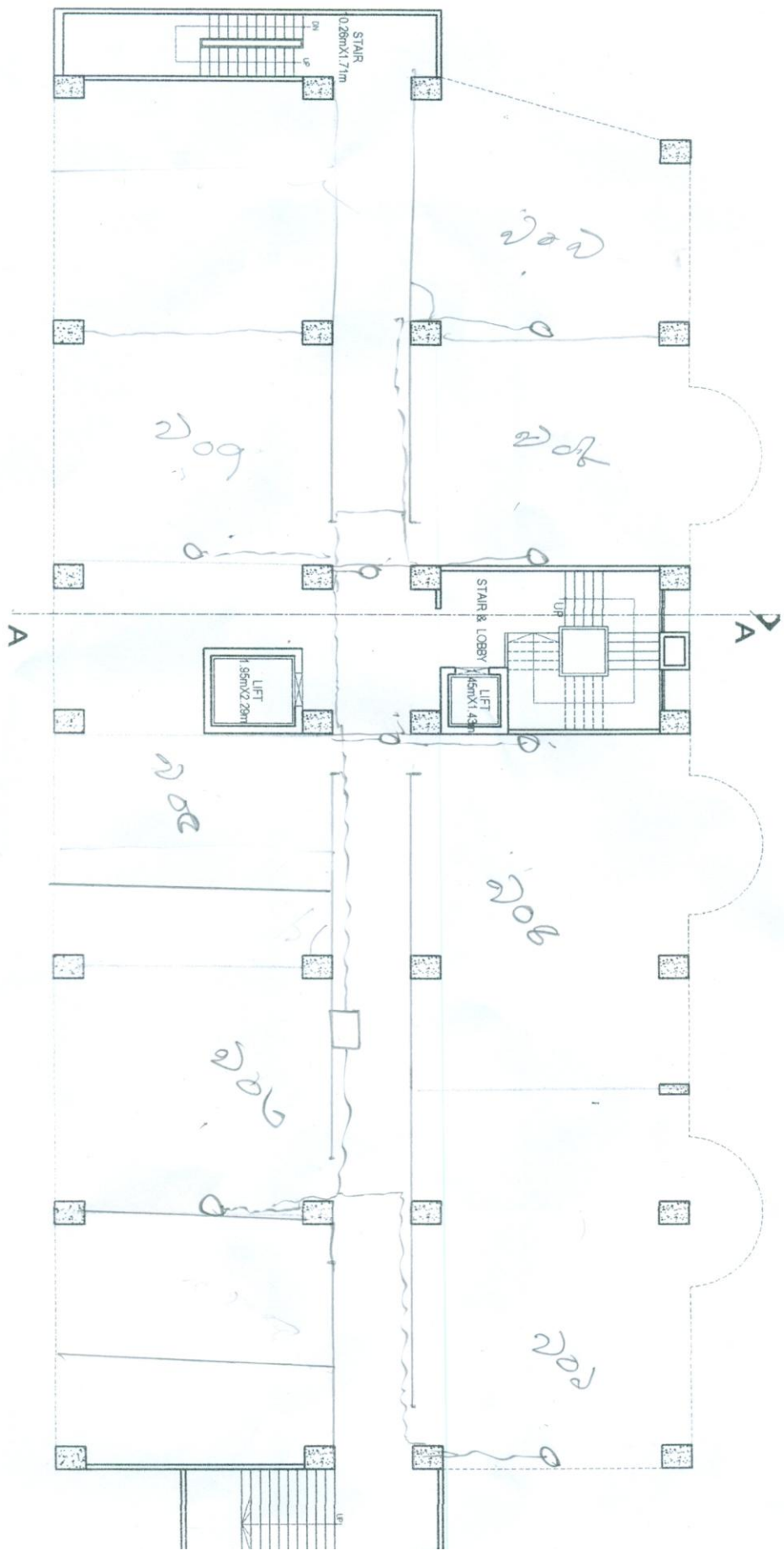
2106-2006



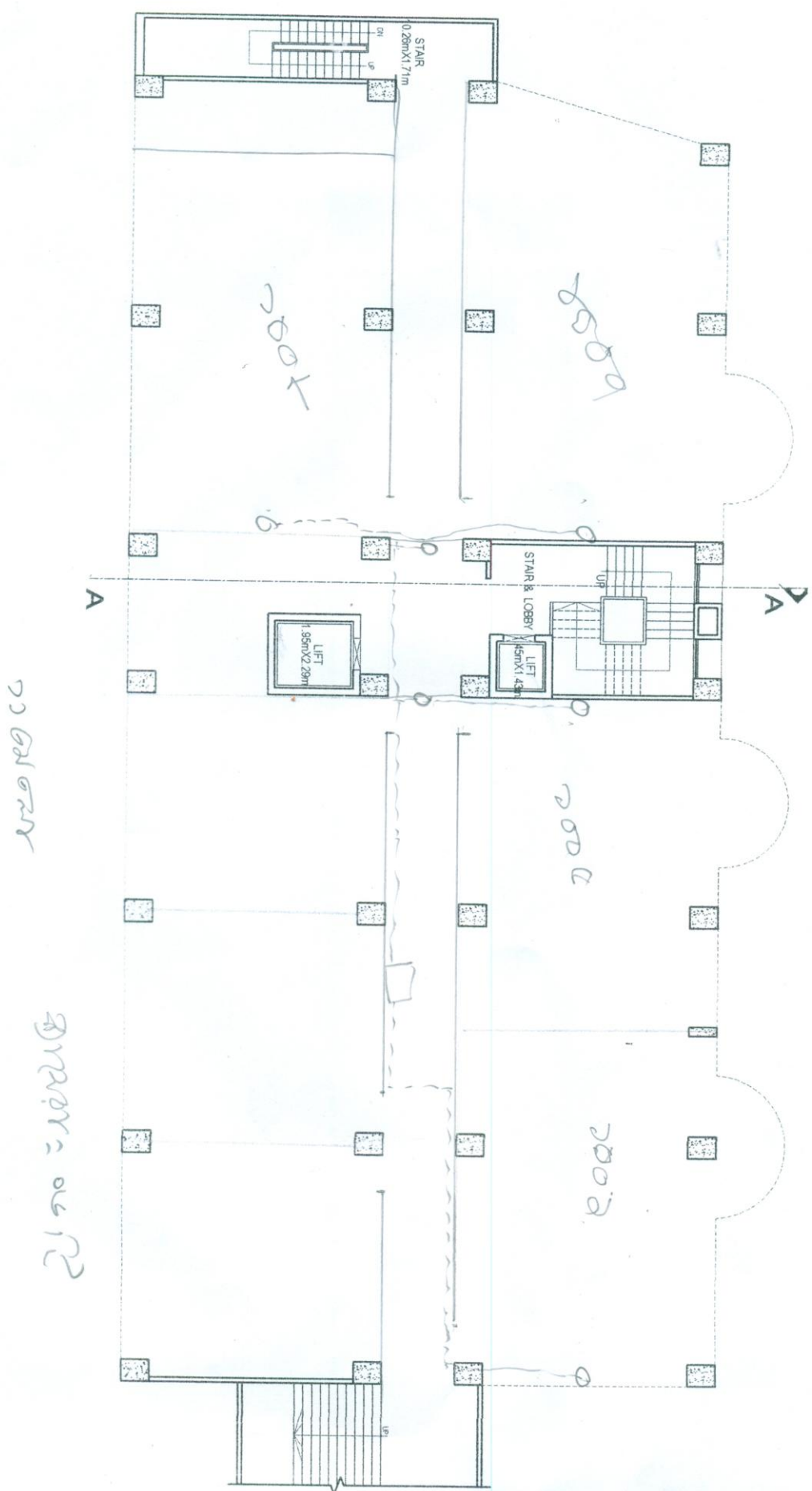
76

on floor

corridor = 0.4 m



20

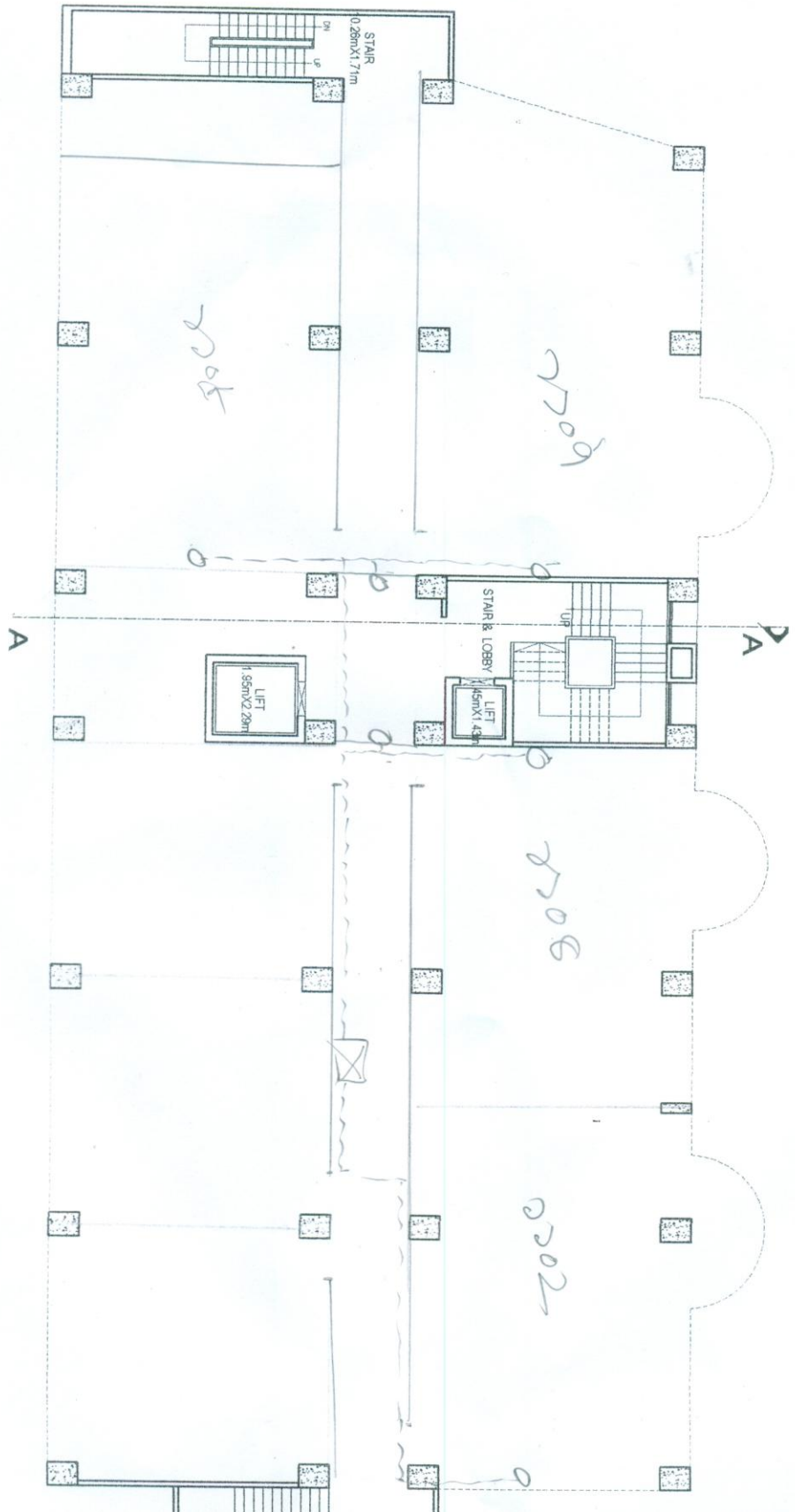


गलियारा

गलियारा के लिए

200

200

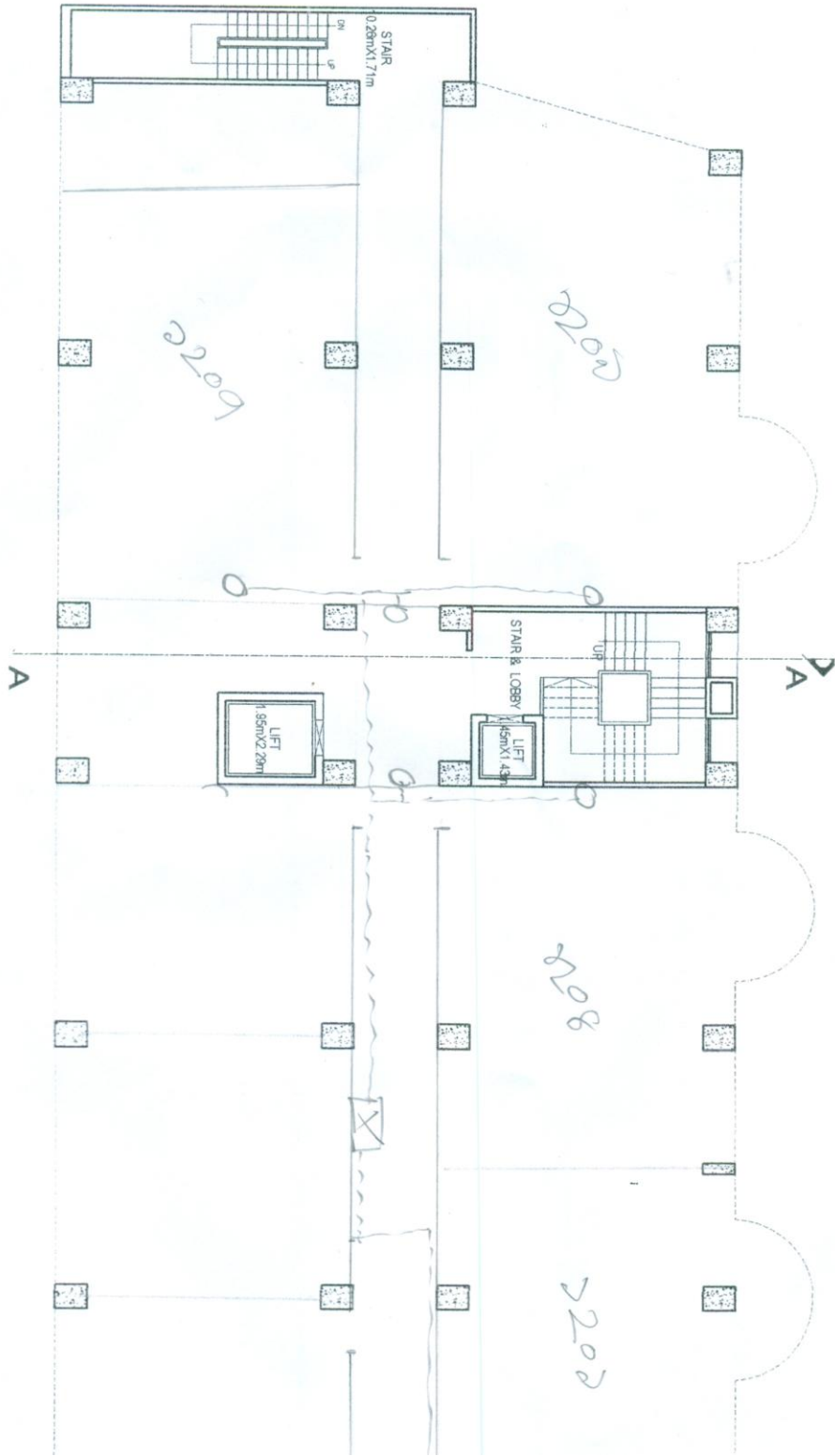


2700-2706

2700-2706

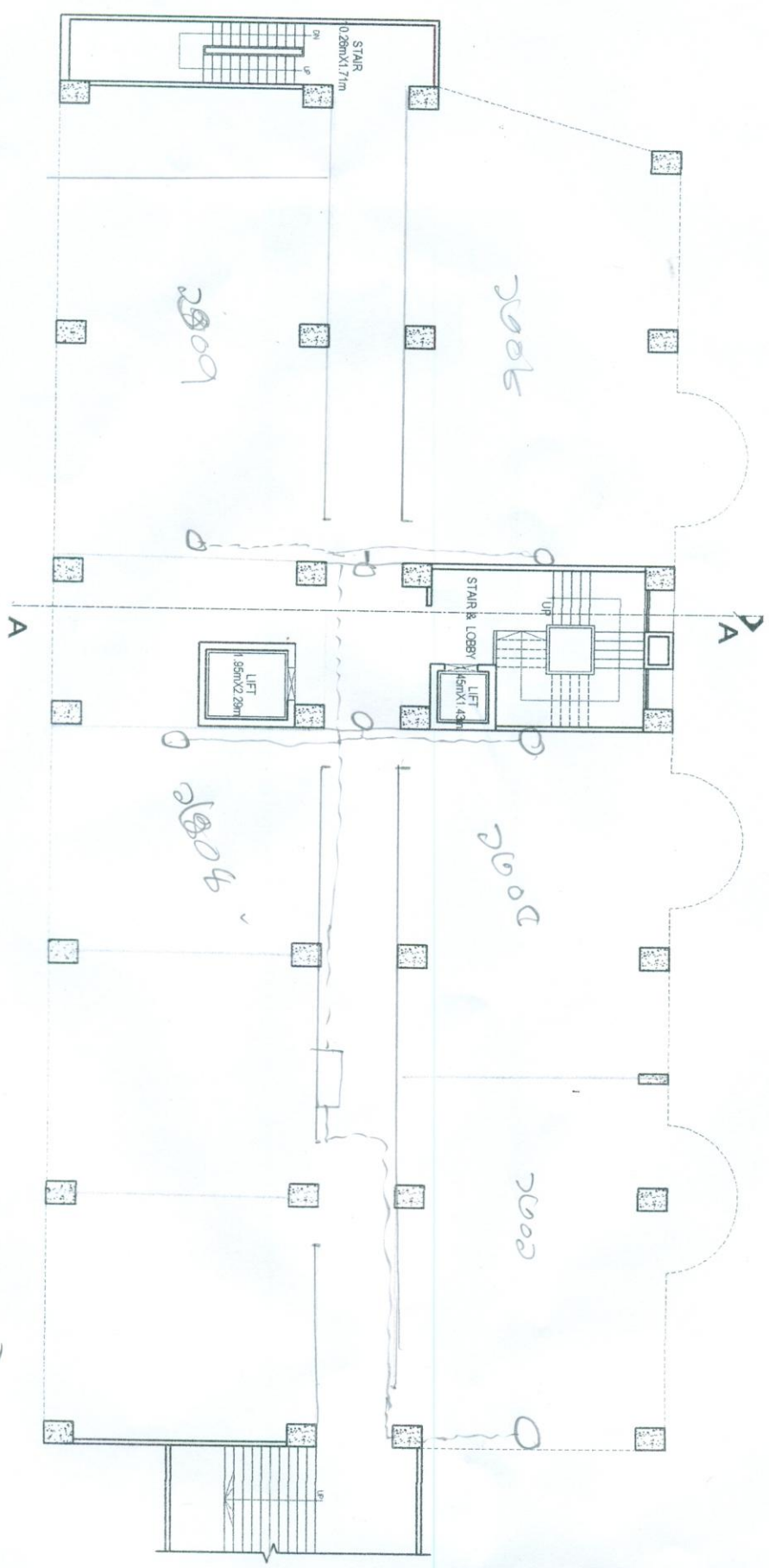


22



26 02 04

201201 = 05



STAIR

BOOB

BOOB

BOOB

BOOB

BOOB

BOOB

LIFT  
1.55m x 2.28m

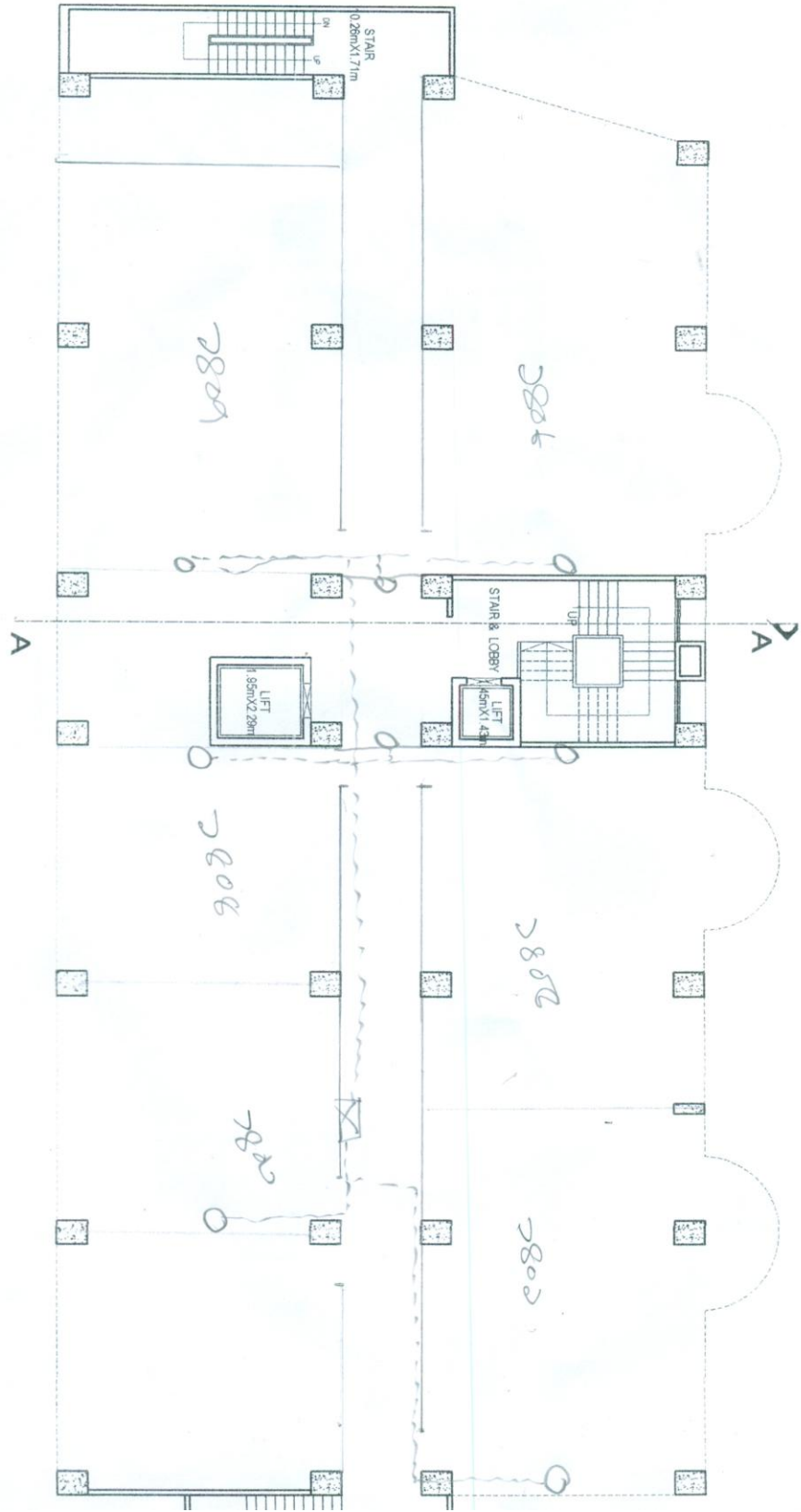
LIFT  
1.55m x 1.43m

STAIR  
1.02m x 1.71m

STAIR & LOBBY

A

B



2005 UNV

2005 OK R2